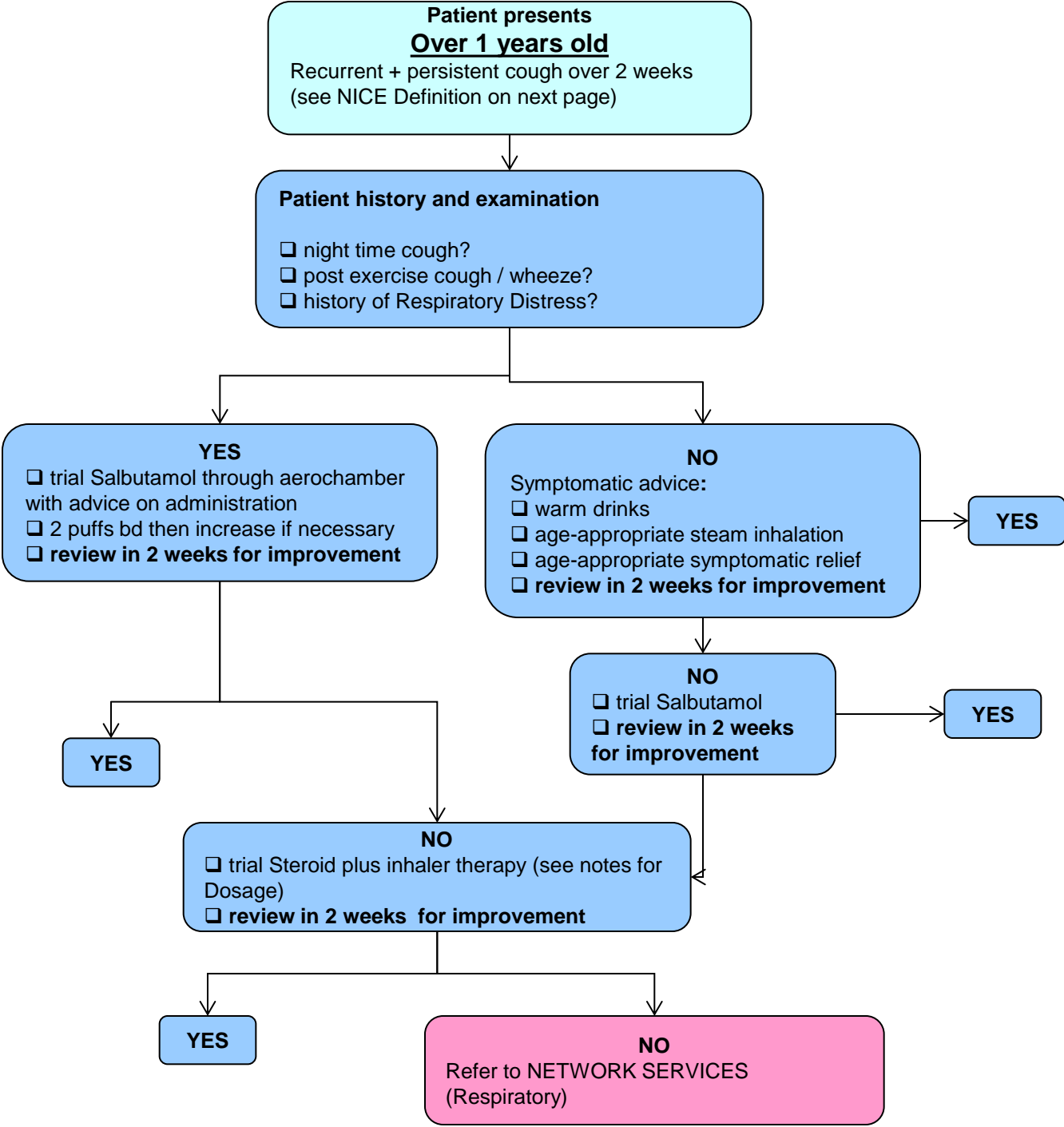


# Asthma (Cough / Wheeze) – Over 1 yr

PDS-G3 Protocol and Pathway – General Paediatrics Specialty (14/03/2011)



**Key**

Patient presents	GP level intervention	GPwSI level intervention	Alternative Outpatient Service	Acute hospital	Red flag
------------------	-----------------------	--------------------------	--------------------------------	----------------	----------

## Further notes and guidance

### NICE Definition of asthma

More than one of:

- Wheeze.
- Cough.
- Difficulty breathing.
- Chest tightness.

particularly when:

- Frequent and recurrent symptoms.
- Worse at night and in the early morning.
- Occurring in response to exercise or trigger.
- Occurring separately from other cold-related symptoms.

## Protocols

For dosage of Steroids, please check BNF

## Links to Map of Medicine and other external sources

Simple instructions on how to use different inhalers

[http://www.asthma.org.uk/using\\_your\\_inhaler.html](http://www.asthma.org.uk/using_your_inhaler.html)

Resources for parents

[http://www.asthma.org.uk/health\\_professionals/materials\\_to\\_help\\_you\\_your\\_patients/resources\\_for.html](http://www.asthma.org.uk/health_professionals/materials_to_help_you_your_patients/resources_for.html)