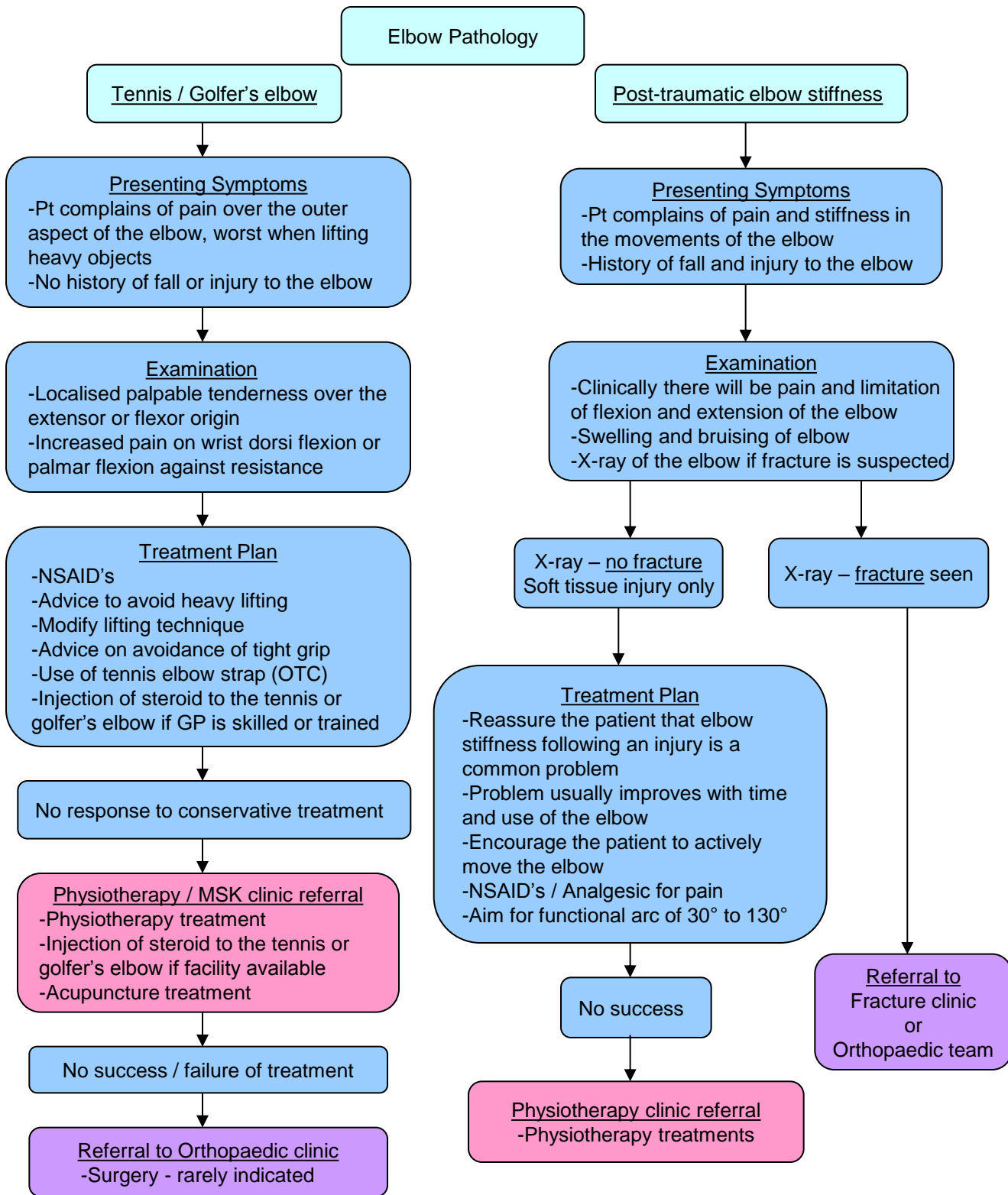


ELBOW

MSK-5 Protocol and Pathway – MSK Specialty (14/03/2011)



Key

Patient presents

GP level intervention

GPwSI level intervention

Alternative Outpatient Service

Acute hospital

Red flag

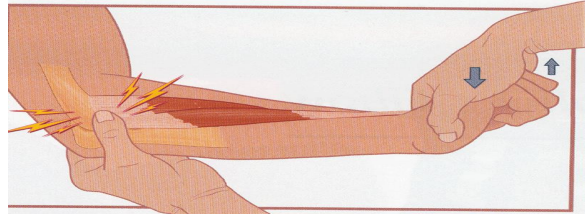
MSK Specialty – Elbow Pathway

Tennis elbow

Pain on lateral aspect of the elbow



Tennis elbow - Examination



Tennis elbow strap
Conservative treatment



Golfer's elbow

Pain on medial aspect of the elbow



Golfer's elbow – Medial Epicondylitis



Post-traumatic elbow stiffness

No fracture – **Soft tissue injury only**
Aim for 30° to 130° range of
Elbow movements

